

NCCR Workshop on Rescue Robotics Technologies

Demonstration Day

July 2nd, 2015 - ETH Zurich

10:00 - 16:00

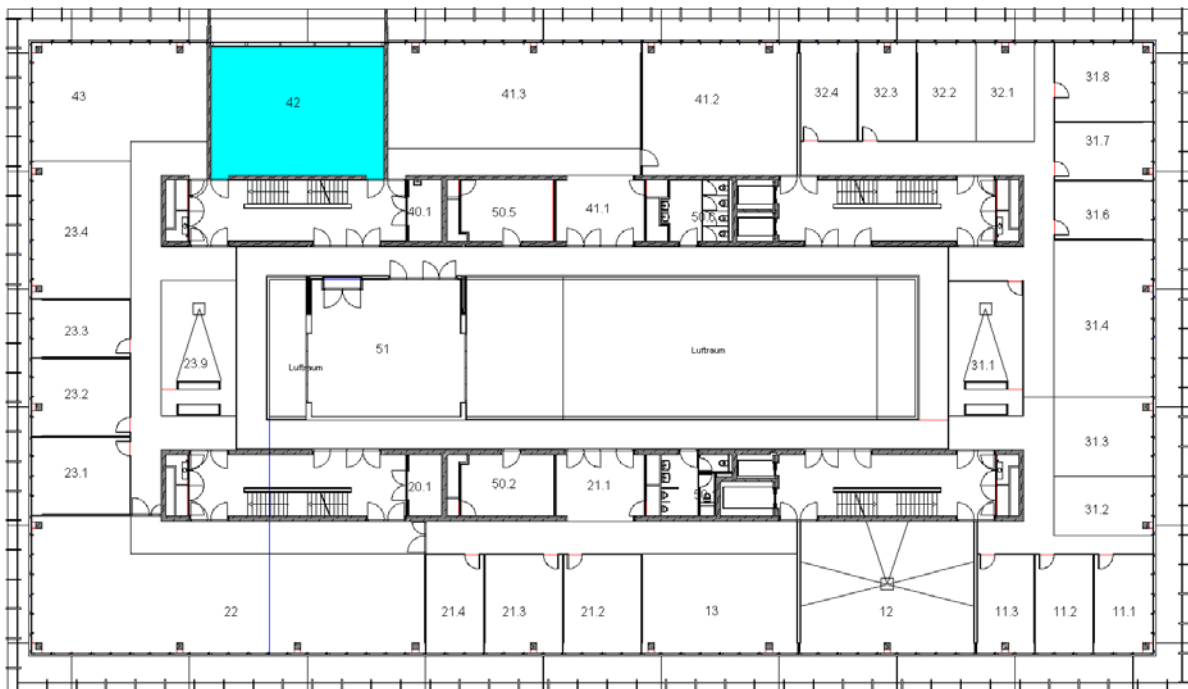
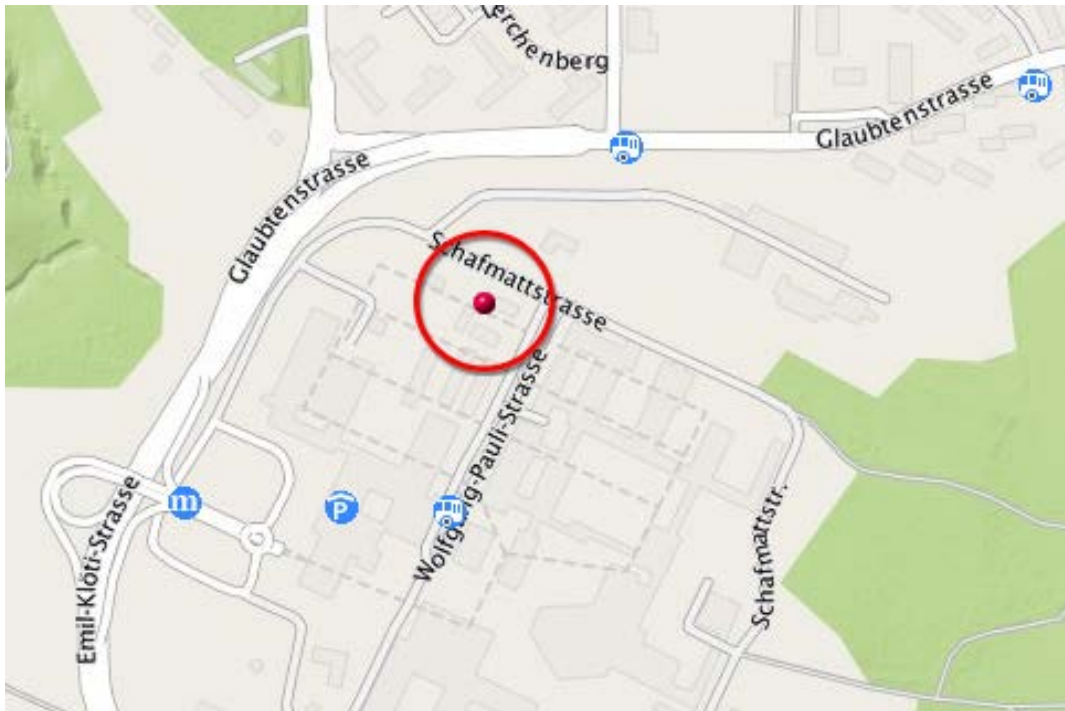
Swiss Federal Institute of Technology - Zurich - (ETH)

Hönggerberg Campus

HIT H 42

Wolfgang-Pauli-Str. 27

8049 Zürich



How to Reach ETH Hönggerberg

From Zurich Main Station (Zürich Hauptbahnhof / Zürich HB)

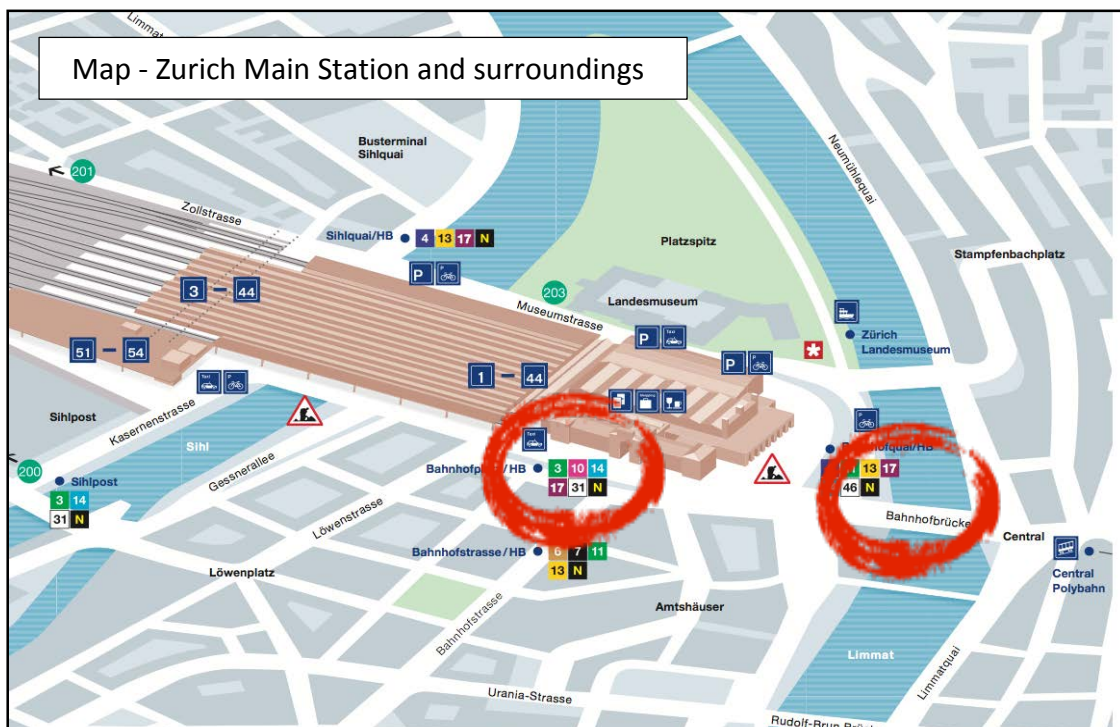
Option 1:

Take **Tram 14** from Zürich Bahnhofquai/HB (towards Seebach) and get off at **Milchbuck**. Change to **Bus 69** towards ETH Hönggerberg.

Journey time: approx. 25 minutes.

Option 2:

Take **Tram 11** from Bahnhofquai/HB (towards Auzelg) as far as **Bucheggplatz**. From there, take bus no. **69** (towards ETH Hönggerberg) as far as the terminus **ETH Hönggerberg**. Journey time: approx. 25 minutes.



From ETH main campus (ETH Zentrum): Shuttle bus ETH Link

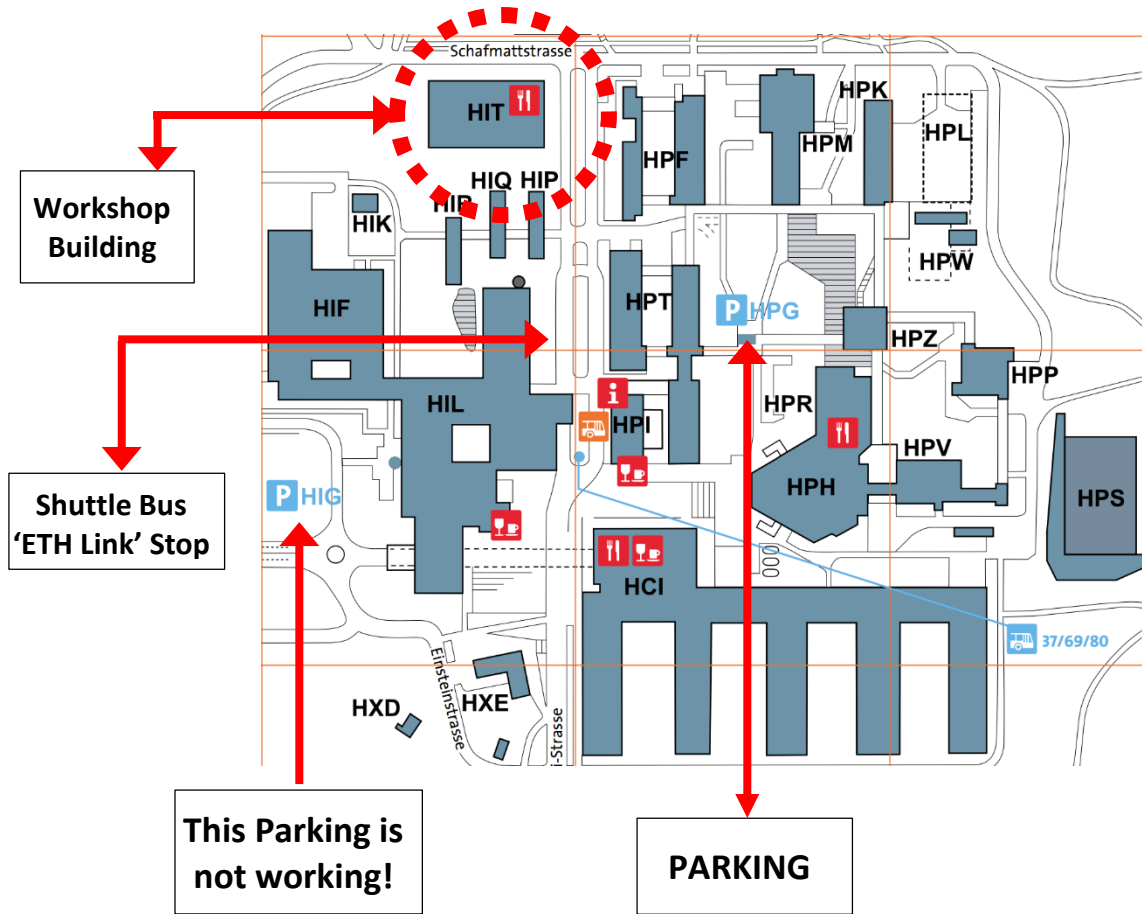
- Monday to Friday
- Departure times: From 8:14 am, every 20 minutes at *.14, *.34 and *.54 minutes past the hour to ETH Zurich, Hönggerberg/Science City
- The last shuttle bus departs at 6:14 pm Departs from: ETH Zurich, Zentrum, in the underpass under the Polyterrasse (Floor C)
- Journey time: approx. 15 minutes

Ticket for public transport: The ticket vending machines have many options and can be switched to English. To get around Zurich and to ETH choose Zone 110:

1 hour - CHF 4.20

24 hour - CHF 8.40

ETH - Campus Höggerberg details



Useful Links :

- Zürich Transport Network Timetable : <http://www.zvv.ch/zvv/de/home.html>
- SBB Timetable : <http://www.sbb.ch/en/home.html>
- ETH Honggerberg Parking : <https://goo.gl/hghQfF>

Contact Information:

Jonas Buchli / Diego Pardo

+41 44 63 392 06

+41 44 63 387 09

+41 787791334

HPZ G 36

John-von-Neumann-Weg 9

8093 Zürich