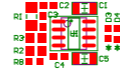


5



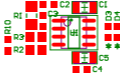
6



3



4



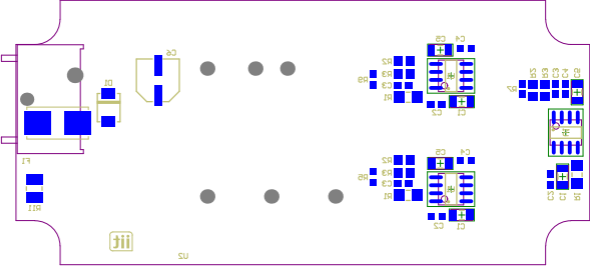
1



2



6 CHANNELS
CURRENT AMP
VER. 1.2 8/12
E01.0044.01
S/N:



Comment	Description	Designator	Footprint	LibRef	Quantity
4.7u	Solid Tantalum Chip Capacitor, Standard T491 Series - Industrial Grade	C1_Amp1, C1_Amp2, C1_Amp3, C1_Amp4, C1_Amp5, C1_Amp6, C5_Amp1, C5_Amp2, C5_Amp3, C5_Amp4, C5_Amp5, C5_Amp6	B	T491B	12
100n	Ceramic Chip Capacitor - Standard	C2_Amp1, C2_Amp2, C2_Amp3, C2_Amp4, C2_Amp5, C2_Amp6, C4_Amp1, C4_Amp2, C4_Amp3, C4_Amp4, C4_Amp5, C4_Amp6	3-0603	C0603	12
1.8n	Ceramic Chip Capacitor - Standard	C3_Amp1, C3_Amp2, C3_Amp3, C3_Amp4, C3_Amp5, C3_Amp6	3-0603	C0603	6
47uF	Solid Tantalum Chip Capacitor, Standard T491 Series - Industrial Grade	C6	CELSMDD	T491B	1
1A (SMB)	1 Amp General Purpose Rectifier	D1	DO-214AA (SMB)	Diode 1N4002	1
ORANGE	Typical BLUE SiC LED	D2	3-0603	LED3	1
YELLOW	Typical BLUE SiC LED	D3_Amp1, D3_Amp2, D3_Amp3, D3_Amp4, D3_Amp5, D3_Amp6	3-0603	LED3	6
GREEN	Typical BLUE SiC LED	D4_Amp1, D4_Amp2, D4_Amp3, D4_Amp4, D4_Amp5, D4_Amp6	3-0603	LED3	6
BLUE	Typical BLUE SiC LED	D5	3-0603	LED3	1
Fuse 2A	Fuse	F1	MiniBlade_Fuse	Fuse 1	1
OUT	Header, 3-Pin	P1_Amp1, P1_Amp2, P1_Amp3, P1_Amp4, P1_Amp5, P1_Amp6	99-3412-282-03	Header 3	6
Vin	Header, 4-Pin	P2	Binder_M8_4way	Header 4	1
Signal In	Header, 8-Pin	P3	HDR1X8	Header 8	1
500	Rectangular Thick Film Chip Resistor, 10 Ohm to 1M Ohm Range, 0.1% and 0.5% Tolerance, 0805 Size, 0.1 W	R1_Amp1, R1_Amp2, R1_Amp3, R1_Amp4, R1_Amp5, R1_Amp6	ERA-0805	ERA6Y	6
47K	Rectangular Thick Film Chip Resistor, 10 Ohm to 1M Ohm Range, 0.1% and 0.5% Tolerance, 0805 Size, 0.1 W	R2_Amp1, R2_Amp2, R2_Amp3, R2_Amp4, R2_Amp5, R2_Amp6, R3_Amp1, R3_Amp2, R3_Amp3, R3_Amp4, R3_Amp5, R3_Amp6	ERA-0805	ERA6Y	12
2.2K	Rectangular Thick Film Chip Resistor, 10 Ohm to 1M Ohm Range, 0.1% and 0.5% Tolerance, 0805 Size, 0.1 W	R4, R12	8-1206	ERA6Y	2
100K	Rectangular Thick Film Chip Resistor, 10 Ohm to 330k Ohm Range, 0.1% and 0.5% Tolerance, 0603 Size, 0.063 W	R5, R6, R7, R8, R9, R10	ERA-0603	ERA3Y	6
10R	Low Ohmic value Thick Film Chip Resistor, 0.22 Ohm to 9.1 Ohm Range, 1%, 2% and 5% Tolerance, 1210 Size, 0.5 W	R11	14-1210	ERJ14BQ	1
OPA551	High-voltage, High-Current Operational Amplifier	U1_Amp1, U1_Amp2, U1_Amp3, U1_Amp4, U1_Amp5, U1_Amp6	SOIC8	OPA544T	6
ESB24240-D-1IP	20W DC/DC Converter	U2	ESB 20W Converter	ESB_DCDC	1